

TE14 Thinpropeller

GENERAL CHARACTERISTICS

Wet / White Wet Inlay dimensions: 97 x 12 mm
—Antenna dimensions: 94 x 8 mm
Standard pitch: 16,42 mm

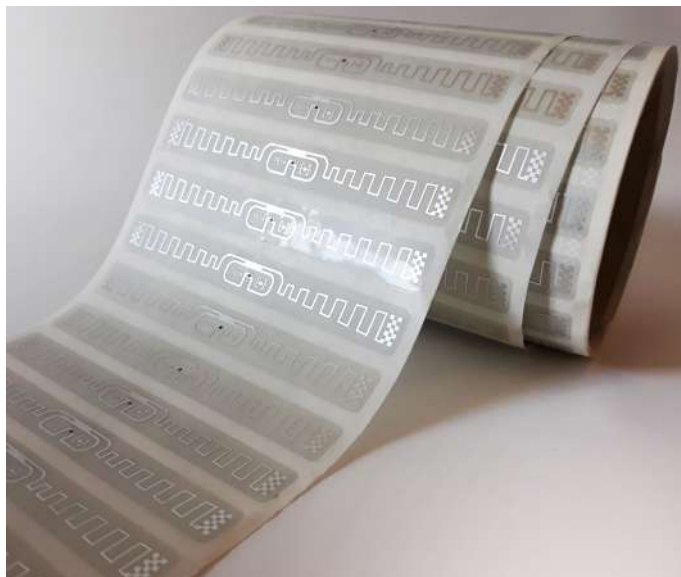
Operating frequency: Global (860 - 960 MHz)
Chip: IMPINJ Monza 4D/E/QT
EPC Memory: 128/496/128 bits
USER Memory: 32/128/512 bits
TID Memory: 96 bits, preencoded for multivendor chip (MCS) based serialization, factory programmed

Inlay substrate material: PET

Inlay-to-liner adhesive: SH3020 (Arconvert)
Liner material: CC62 (Arconvert)
Total thickness over chip: 187 microns

Minimum order quantity: 10,000 pcs. Average of units per roll: TBD

The UHF RFID tag TE14 Thinpropeller is **ideal for long-range RFID deployments**, or for labelling pallets and containers. But it is also optimizable for near-field operations. Like all aluminum inlays, this tag shows better performance at lower prices than other tags of other materials.

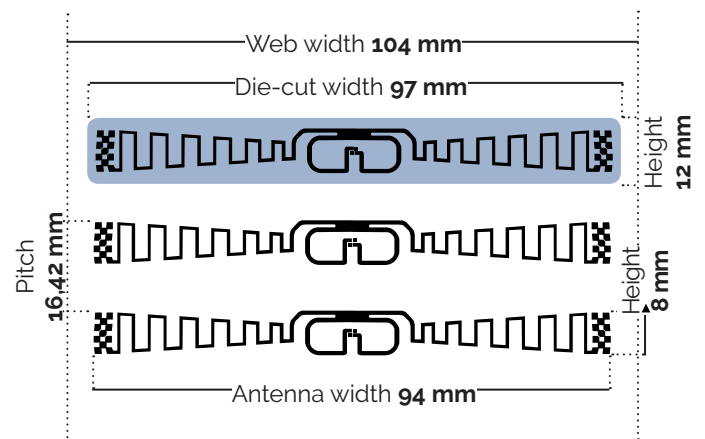


Standard web width: 104 mm
Unwind direction: Label side out

RF Protocol: ISO-18006-C, EPC Class 1, Gen 2
RoHS: EU Directive 2011/65 EU Compliant
Quality assurance: 100% read tested with out-of-tolerance inlay marked
Operating temperature: -40°C to 85°C

COMMON APPLICATIONS

Supply chain, inventory, and logistics. Apparel and other retail item level. Returnable Transport Units (RTU).



CARE AND HANDLING RFID inlays are sensitive to ESD. Observe standard practices to keep environmental static charge to a minimum. APPLICATIONS This product should be tested by the customer/user thoroughly under end use conditions to ensure the product meets the requirements. Trace-ID does not represent that this product is fit for any purpose or use. PRODUCT CHANGES Trace-ID reserves the right to modify, change, supplement or discontinue product offerings at any time without notice. © 2018 Trace-tech Id Solutions S.L. All rights reserved.